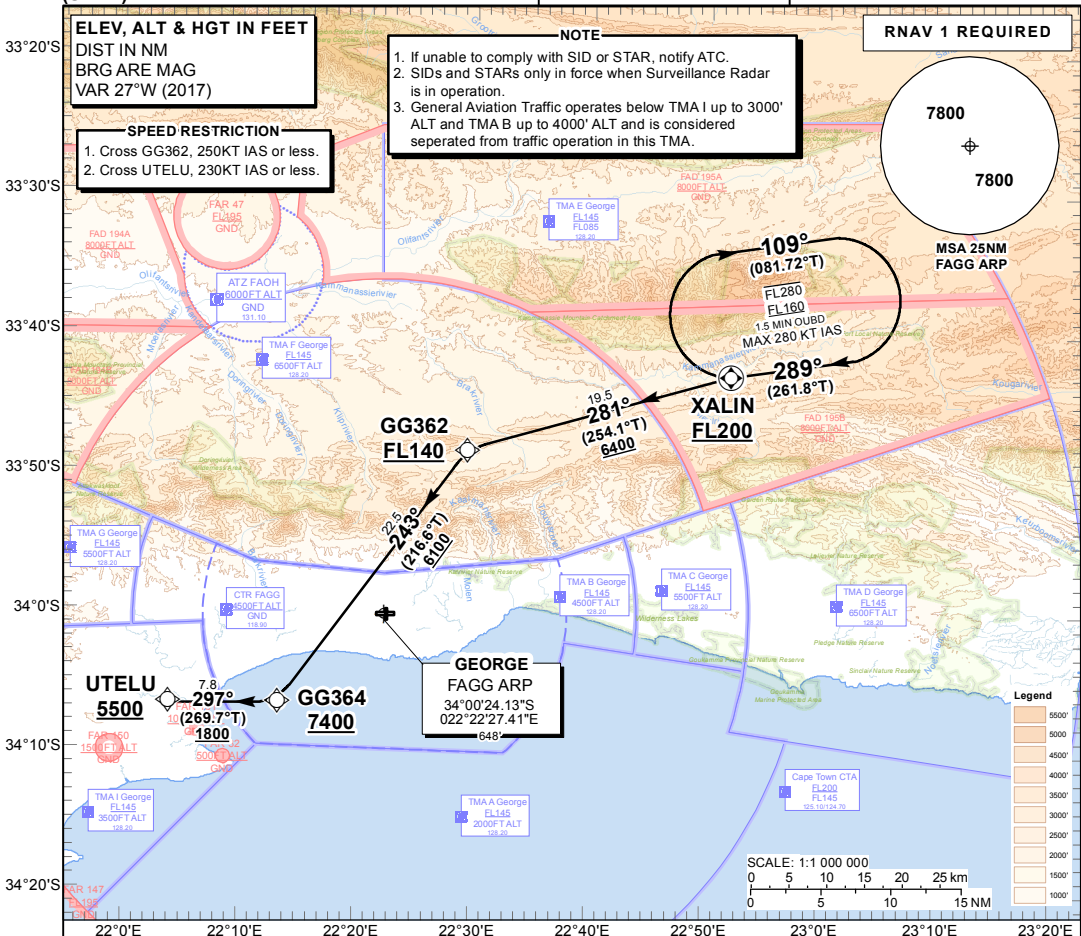


**STANDARD ARRIVAL
CHART - ICAO
INSTRUMENT
(STAR)**

TRANSITIONAL ALTITUDE
8000'
TRANSITIONAL LEVEL
ATC

APP: 128.20
TWR: 118.90
APN: 122.65
ATIS: 126.225

**GEORGE
RNAV (GNSS) RWY 11
XALIN 1B**



**XALIN 1B:
RWY 11** Leave XALIN for GG362. At GG362 turn left to GG364. At GG364 turn right to UTELU, and continue on the RNAV (GNSS) APCH RWY 11 or establish on the ILS LOC RWY 11. Request RADAR vectors if required.

COMMUNICATION FAILURE PROCEDURE (Squawk 7600)
Before XALIN: Proceed to XALIN and enter the XALIN RNAV (GNSS) hold. Hold at FL160 for minimum 5 MIN. Leave XALIN on the "After XALIN" Communication Failure Procedure.
After XALIN: Continue on the XALIN 1B RNAV (GNSS) STAR and continue on the the RNAV (GNSS) APCH RWY 11 or establish on the ILS LOC RWY 11 and land.

CHANGE: NEW Procedure